

SUMITOMO ELECTRIC GROUP

Sumitomo Electric Europe Ltd

Statement on Slavery and Human Trafficking for Financial Year 2024-2025

Contents

Introduction	2
1. Organisational Structure, Business & Supply Chains	3
Our Business	3
Supply Chain Overview.....	3
2. Organisational Policies	3
Corporate Governance & Oversight.....	3
Code of Conduct & Supplier Code of Conduct	3
Human Rights Policy & Due Diligence.....	3
3. Assessing and Managing Risk	3
Risk Assessment Process	3
Risk Prioritisation and Management.....	4
Incident Example and Remediation.....	4
4. Due Diligence in Relation to Modern Slavery	4
Supplier Due Diligence	4
Monitoring and Audits	4
Grievance and Remediation Mechanisms	5
5. Training	5
6. Monitoring and Evaluation: Understanding and Demonstrating Effectiveness	5
Performance Indicators	5
Continuous Improvement	5
Whistleblowing Speak up Culture	5
Intent and Commitment	5

SUMITOMO ELECTRIC GROUP

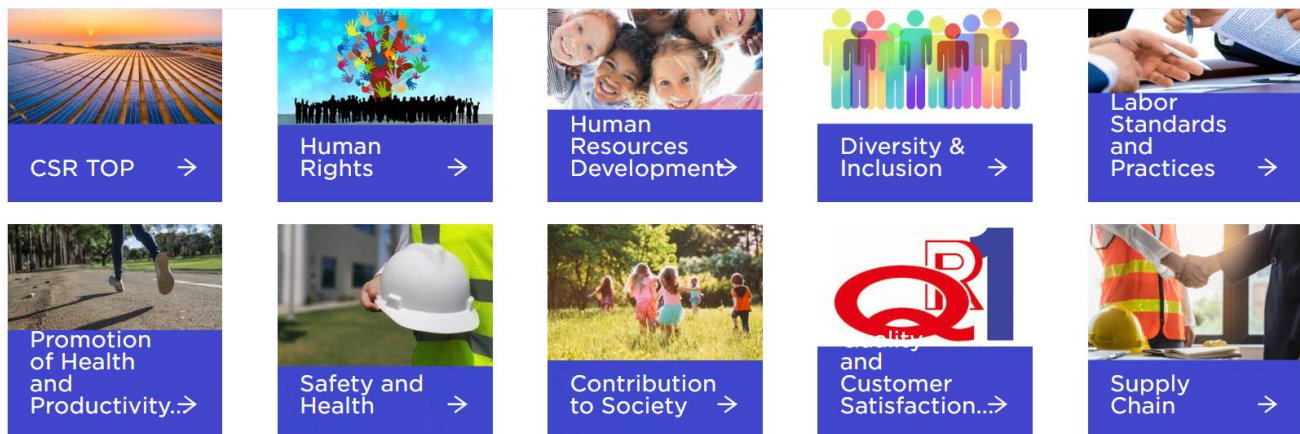
Sumitomo Electric Europe Ltd

Introduction

This statement is made in accordance with Section 54 of the Modern Slavery Act 2015 and outlines the measures being taken by **Sumitomo Electric Europe Ltd** (hereinafter "**SEEL**") to prevent modern slavery and human trafficking ("**Modern Slavery**") in our business and supply chains during the financial year 2024-2025.

SEEL is part of the larger Sumitomo Electric Group ("**SEG**") of companies, SEG, in accordance with its corporate philosophy which consists of the Sumitomo Spirit and the Corporate Principles, strives to be a group of companies worthy of society's trust by conducting its business activities in an honest manner.

SEG recognises that ethical labour practices, including modern slavery prevention, are fundamental to the group's success, sustainability, and integrity and have outlined labour and employment activities on the group [CSR portal](#). These are not just aspirational commitments, but policies which demonstrate our practical processes in ensuring an ethical work place is a reality.



The [Sumitomo Spirit](#) encourages all employees, officers and directors ("**Employees**") to:

- **Banji-nissei** - do their best not only in business, but in every aspect of their lives;
- **Shinyo-kakujitsu** - place importance on integrity and good management; and
- **Fusu-furi** - never sacrifice integrity for easy profit.

Additionally, each company of SEG shall commit to drive their business based on key corporate principles:

- Offer the very best goods and services to satisfy customer needs;
- Build technical expertise, realise changes and strive for consistent growth;
- Contribute to creating a better society and environment, with a firm awareness of our social responsibility;
- Maintain high corporate ethics and strive to become a company worthy of society's trust; and
- Nurture a lively corporate culture that enables employee self-improvement.

SUMITOMO ELECTRIC GROUP

Sumitomo Electric Europe Ltd

1. Organisational Structure, Business & Supply Chains

Our Business

SEEL is a subsidiary of Sumitomo Electric Industries Ltd ("**SEI**") which itself forms part of the Sumitomo Electric Group. SEI is a Japanese manufacturer of electrical wire, optical fibre cables, electronics and hard metal products established in 1897. SEI's headquarters are in, Osaka, Japan.

SEEL is responsible for sales and support in the EMEA region of a range of products manufactured by other SEG companies. The product range includes optical fibre, optical fibre cable, fusion splicers, optical transmission components, microwave components, electric power transmission cables and components for battery electric vehicle charging stations. As of August 2025, SEEL has around 83 employees based across the UK, Italy, Czech Republic, Sweden, Finland and the Netherlands.

Supply Chain Overview

SEEL's global supply chain spans across 7 countries and it sells its products to more than 50 countries across the EMEA region, excluding any countries under sanction. Its consolidated turnover is approximately GBP 111.7M. SEEL's supply chains encompass multiple tiers, including direct and indirect suppliers of components, and services such as HR, facilities management, and logistics.

We actively map our supply chains, which includes understanding recruitment practices and sourcing of migrant workers.

2. Organisational Policies

Corporate Governance & Oversight

The Corporate Social Responsibility Committee ("**CSR Committee**"), formed of senior management from SEG, is committed to ensure the best strategy for supporting and advancing human rights, including abating modern slavery risks, in all the communities where SEG operates. Each year the [CSR Committee](#) describes the measures taken by SEG to further strengthen its corporate social responsibility and SEG complies with and expects its suppliers to comply with the [Corporate Social Responsibility Basic Policy](#).

Code of Conduct & Supplier Code of Conduct

Our SEG [Global Code of Conduct](#) prohibits all forms of modern slavery and is available in over 30 languages. It sets clear standards for all employees and business partners. Awareness and understanding of the Code of Conduct is promoted to Employees by face-to-face training, e-learning and effective internal communication.

The [Supplier Code of Conduct](#) ("**SCoC**"), adopted in 2021, contractually binds suppliers to upholding ethical labour standards, human rights, and zero tolerance for modern slavery. Non-compliance can result in contract termination.

Human Rights Policy & Due Diligence

Guided by the UN Guiding Principles and international standards, [SEG's Global Policy on Human Rights](#) commits to continuous improvement and thorough due diligence, integrating these standards into decision-making and supplier relationships. The Human Rights Policy applies to SEEL as a subsidiary of SEG. SEG also expects all business partners related to its business activities to comply with the Policy.

3. Assessing and Managing Risk

Risk Assessment Process

SEG uses a risk assessment framework that covers all tier 1 and high-risk tier 2 parties of our supply chain, including suppliers, subcontractors, and support functions. In FY 2023-2024, an independent review focused on migrant worker conditions and confirmed low risks overall, while identifying specific improvement areas in relation to migrant workers which we have been able to address in FY 2024-2025. Risk assessments undertaken have shown there is no evidence of forced labour in our workforce or labour supplier chain and no incidences of child labour.

SUMITOMO ELECTRIC GROUP

Sumitomo Electric Europe Ltd

Risk Prioritisation and Management

Risk is prioritised monitoring regulatory demands and using geographic, sectoral, and labour vulnerability factors. We engage local experts, NGOs, and legal advisors to validate findings and plan actions as necessary.

We have also developed day-to-day commercial practices which support risk management; SEEL requires high risk suppliers to agree to and comply with legal compliance and ethical conduct terms, including, by accepting the SCoC in commercial contacts, or adhering to enhanced modern slavery clauses.

Incident Example and Remediation

SEG proactively addressed the payment of recruitment fees to third parties by migrant workers. During our review, we identified an area for improvement within one of our SEG group companies in Hungary. It was discovered that, unbeknownst to the SEG company, some migrant workers had paid recruitment fees to third-party agencies—contrary to SEG’s zero-recruitment fee commitment under our Global Migrant Worker Policy.

Restitution has since been made to the affected workers. Following legal consultations, the SEG group company has taken further steps to prevent recurrence and reinforce ethical recruitment practices. These include:

- Educating current recruitment partners on modern slavery risks and their legal obligations.
- Strengthening existing contracts with enhanced modern slavery clauses to ensure compliance and accountability.
- Introducing in contracts an external Migrant Worker Policy for third-party recruitment agencies, clearly outlining their responsibilities under modern slavery legislation.

SEG remains committed to continuous improvement, robust oversight, and ensuring that all operations and partners uphold our ethical standards and legal obligations.

4. Due Diligence in Relation to Modern Slavery

Supplier Due Diligence

As part of the SEG Compliance Programme, new and current business partners must go through the [Human Rights Due Diligence process](#) in order for SEG to be assured that the business partners it engages with meet the required standards of ethical conduct. To ensure that SEG’s initiatives are promoted in line with the Human Rights Policy, adverse media report scanning and fact-finding investigations are conducted regularly of our high-risk stakeholders, including domestic and overseas affiliates. Where modern slavery indicators are flagged, we carry out enhanced checks. We monitor higher-risk suppliers through regular reviews and follow-ups to ensure compliance and drive continuous improvement across our supply chain.

We have encountered suppliers with history of ethical labour concerns, and in such relationships, insured the inclusion of enhanced modern slavery clauses and sought non-negotiable compliance with the SCoC. All prospective and existing suppliers undergo human rights due diligence and must comply with SCoC requirements. Contractual clauses allow termination for modern slavery violations.

SEG continues to develop internal expertise and alignment with the Corporate Sustainability Reporting Directive in the EMEA region and provided training to senior management. In addition, SEG continues to advance its relationship with external vendors, including trialling due diligence software to support supply chain monitoring, human rights due diligence and mitigate risks related to modern slavery within the SEEL supply chain.

Monitoring and Audits

We monitor supplier compliance via audits, media screening, and performance reviews, with worker interviews and third-party verifications for accuracy. Specifically, the SEG HR team conducts periodic reviews of its supply chain via a questionnaire to its group companies designed to scan risks around unethical labour practices and modern slavery (including child labour, forced labour, and migrant worker issues) in the labour supply chain. When risks are identified the business concerned is scrutinised further.

SUMITOMO ELECTRIC GROUP

Sumitomo Electric Europe Ltd

Grievance and Remediation Mechanisms

SEEL encourages suppliers to establish grievance channels. Internally, an externally operated whistleblowing hotline (Navex) provides protected channels for employees and business partners to report concerns. We regularly analyse and periodically audit our whistleblowing reports to track trends, remedial action and develop more-focused training on key issue areas.

5. Training

Training is provided regularly within SEG to build awareness of unethical conduct including human rights abuses, bullying and harassment and modern slavery. All employees at SEG receive ongoing training on the SEG Code of Conduct which, includes express references to the Human Rights Policy, anti-harassment training, whistleblowing and our new workplace culture training in the EMEA region. Customised training is provided to employees operating in relevant risk areas.

6. Monitoring and Evaluation: Understanding and Demonstrating Effectiveness

Performance Indicators

KPIs include:

- Percentage of suppliers signed up to SCoC
- Number of due diligence assessments conducted
- Number and outcome of whistleblowing reports related to modern slavery
- Rate of completed employee training

Continuous Improvement

SEG reviews and updates policies and practices every year, drawing on risk assessments, incident outcomes, stakeholder feedback, and evolving legal standards (such as the EU Corporate Sustainability Due Diligence Directive). Our standard modern slavery clauses continue to be reviewed on a periodic basis to ensure they remain robust and fit for purpose. For FY 2024-2025, SEG is focusing on strengthening its SCoC to ensure alignment with the forthcoming CSRD and updating its Human Rights Policy and due diligence processes.

Whistleblowing and Speak up Culture

SEG continues to promote a 'speak up' culture that encourages a workplace where Employees feel comfortable raising concerns about unsafe, unethical or unlawful practices. This 'speak up' culture is facilitated, in part, by an external whistleblowing hotline (operated by Navex), with an option of anonymity, for Employees or business partners to raise their concerns. The SEG Code of Conduct and Whistleblowing Policy prohibit retaliation against those that raise concerns of unsafe, unethical or unlawful practices.

Reports raised internally or via the external hotline are used to measure the effectiveness of training and the levels of awareness and understanding of Employees of unethical practices including on Modern Slavery.

SEG has also committed to prioritising investigations related to human rights, modern slavery and employee issues with a view to completing such investigations in the shortest time possible. In FY 2024-2025 there were no reported concerns of modern slavery.

Intent and Commitment

SEG and SEEL is steadfast in its responsibility to respect and strengthen human rights across its global operations and supply chains; and we also remain committed to supporting suppliers in assessing and addressing modern slavery concerns in their business and supply chains.

This statement has been approved by the SEEL management team.

SUMITOMO ELECTRIC GROUP

Sumitomo Electric Europe Ltd

津田 裕三

Hirokazu Tsuda

Managing Director

Date: 26 Sep, 2025